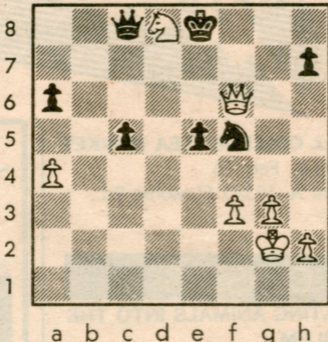


Chess



By Frisco Del Rosario
E. DONALDSON-SUBA
White to play and win.



LOVE STORY

International chess stars John Donaldson of Seattle, Wash., and Elena Akhmilovskaya of the Soviet Union surprised the chess world Nov. 25, 1988, when they married during the chess Olympiad in Thessaloniki, Greece, and fled to West Germany.

The couple met in Havana during the 1985 women's interzonal and again at the Dubai Olympiad and the women's world championship candidates tournament in 1986 (Akhmilovskaya won the candidates event but was unsuccessful in her challenge of world champion Chiburdanidze). They married in Thessaloniki because they weren't sure they would have another chance.

Elena's primary concern was then reuniting with her 9-year-old daughter Dana, who remained in the Soviet Union. Dana was allowed to rejoin her mother in July 1989.

The Donaldsons live in Seattle. John is one of America's most influential chess figures — he is a member of the U.S. Chess Federation Policy Board and the associate editor of *Inside Chess*. Elena is the reigning U.S. women's champion.

Seattle 1990

White: David Weinstock

Black: Elena Donaldson

King's Gambit

- | | |
|---------------------------|-------------|
| 1. e4 e5 | 27. Qd4 f3 |
| 2. f4 ¹ ef4 | 28. gf3 ef3 |
| 3. Nf3 d6 | 29. Bc3 Nb3 |
| 4. d4 g5 | 30. ab3 Rf6 |
| 5. h4 g4 ² | 31. Qd1 f2 |
| 6. Ng1 Nf6 | 32. Bf6 Ng3 |
| 7. Nc3 Nh5 ³ | 33. Be7 f1Q |
| 8. Qd3 ⁴ Nc6 | 34. Bd6 Ne2 |
| 9. Nge2 Be7 | 35. Kd2 Qd1 |
| 10. Qb5 f5 | 36. Kd1 Nd4 |
| 11. d5 ⁵ a6 | 37. c7 Kf7 |
| 12. Qa4 b5 | 38. b4 Ke8 |
| 13. Nb5 ab5 | 39. c3 Nf5 |
| 14. Qa8 ⁶ Nb4 | 40. Bc5 Nh4 |
| 15. Nd4 0-0 ⁷ | 41. b5 Kd7 |
| 16. Qa3 ⁸ c5! | 42. b6 Kc8 |
| 17. dc6 d5 | 43. Kc2 Bd5 |
| 18. Qb3 fe4 | 44. b3 g3 |
| 19. Bd2 Na6 | 45. c4 Bb7 |
| 20. 0-0-0 Nc5 | 46. b4 Nf5 |
| 21. Qb5 Ng3 | 47. b5 h5 |
| 22. Ba5 Qd6 | 48. Bg1 h4 |
| 23. Nb3 ⁹ Nh1 | 49. c5 h3 |
| 24. Rd5 Qd5 ¹⁰ | 50. c6 h2 |
| 25. Bc4 Qc4 | 51. cb7 Kb7 |
| 26. Qc4 Be6 | 52. Resigns |

NOTES:

- White sacrifices a pawn so he'll have an extra pawn in the center and the open f-file to play on.
- One of the reasons behind 3...d6 is that White can't play 6.Ne5 now.
- White had to guard his e-pawn and Black goes on to h5 where he protects the pawn that keeps the dangerous f-file closed.
- Anticipating 9.Nge2 f3.
- White must play aggressively because Black's ...Bh4 looms large.
- A well-planned sacrifice. White's queen is far removed.
- Black's extra development, king safety and stormcloud of pawns are fair compensation for the sacrifice.
- White had to extricate his queen sometime. Now Black's king bishop cuts loose and the pawn swarm grows.
- With more pressure on d5, and intending to meet 23...Ba6 with 24.Qc5.
- White wins Black's queen now, but Black has enough in return — one rook, two minor pieces and those great pawns.

SOLUTION: 1.Nf7! wins (2.Qf5 and 3.Nd6 are unstoppable: 1...Ne3 2.Kf2 Nd5 3.Nd6 Kd7 4.Qf5+-).

Happy Valentine's Day, Kristen Bareuther.